



## Multipoint Diamond Dresser

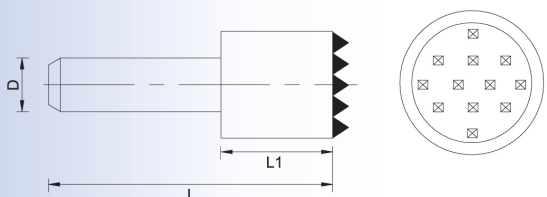
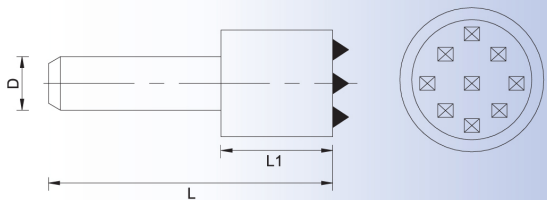
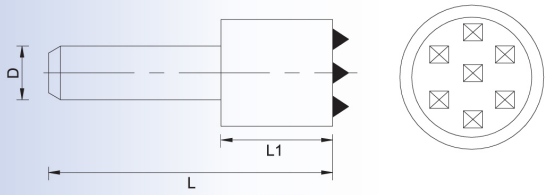
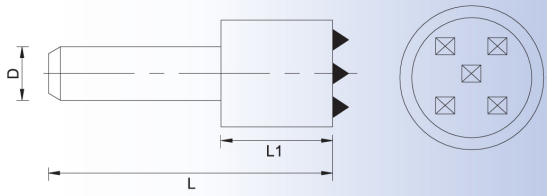
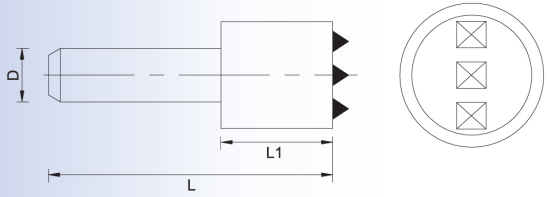
Multipoint diamond dressers consist of number of natural diamonds of a good crystal character fixed into a special wear resistant bond. The diamonds can be arranged in different pattern in single layer or multiple layers depending upon the field of operation. Several diamond points in contact with the wheel face, reduce the unit pressure on each point resulting in a longer tool life with full utilization. Multipoint dressers are used for large wide grinding wheels.

### Advantages of the tool



### To get the maximum tool life

- ☞ Set the Multipoint tool into the center of the grinding wheel.
- ☞ Depth of cut should not exceed more than 0.01-0.04 mm.
- ☞ Use plenty of coolant to increase the tool life.
- ☞ The mounting must be vibration free, with the clamping length as short as possible.



Tool Code	Diamond Qty.	Diamond Layer
MP-3	3	Single
MP-3A	6	Double
MP-3B	9	Triple
MP-5	5	Single
MP-5A	10	Double
MP-5B	15	Triple
MP-7	7	Single
MP-7A	14	Double
MP-7B	21	Triple
MP-9	9	Single
MP-9A	18	Double
MP-9B	27	Triple
MP-12	12	Single
MP-12A	24	Double
MP-12B	36	Triple